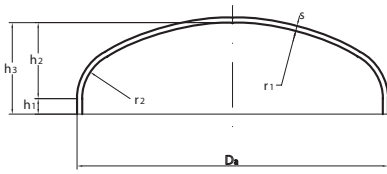


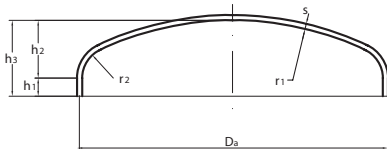
Ausführungsformen

Korbbogenboden DIN 28013



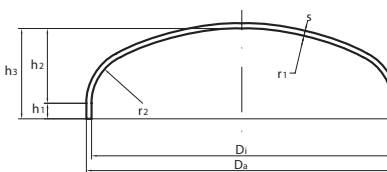
$$\begin{aligned} r_1 &= 0.8 \times D_a & h_1 &\geq 3.5 \times s \\ r_2 &= 0.154 \times D_a & h_2 &= 0.255 \times D_a - 0.635 \times s \\ & & h_3 &= h_1 + h_2 \end{aligned}$$

Klöpferboden DIN 28011



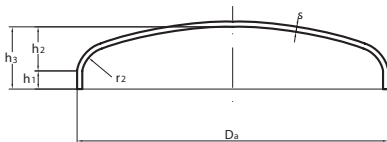
$$\begin{aligned} r_1 &= D_a & h_1 &\geq 3.5 \times s \\ r_2 &= 0.1 \times D_a & h_2 &= 0.1935 \times D_a - 0.455 \times s \\ & & h_3 &= h_1 + h_2 \end{aligned}$$

Elliptischer Boden



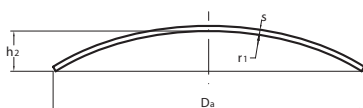
Form 2 : 1	Form 1.9 : 1
$D_i = D_a - 2 \times s$	$D_i = D_a - 2 \times s$
$r_1 = 0.9 \times D_i$	$r_1 = D_i / 1.16$
$r_2 = 0.17 \times D_i$	$r_2 = D_i / 5.39$
$h_1 = \text{gem. Angabe}$	$h_1 = \text{gem. NF E81-103}$
$h_2 = 0.25 \times D_i$	$h_2 = D_i / 3.8$
$h_3 = h_1 + h_2$	$h_3 = h_1 + h_2$

Normal- / Flachgewölbter Boden



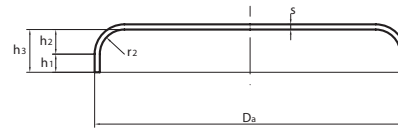
$$\begin{aligned} r_1 &= D_a \text{ (normalgewölbter Boden)} & h_1 &\geq 3.5 \times s \\ r_1 &= 1.3 \times D_a \text{ (flachgewölbter Boden)} & h_2 &= \text{Wölbungshöhe} \\ r_2 &= \text{je nach Größe (15 - 50 mm)} & h_3 &= h_1 + h_2 \end{aligned}$$

Gewölbte Scheibe



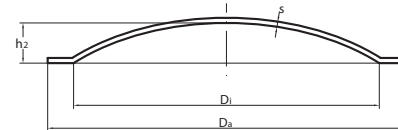
Form $r_1 = D_a$	Form $r_1 = 0.8 \times D_a$	Form r_1 nach Angabe
$h_2 = 0.134 \times D_a$	$h_2 = 0.176 \times D_a$	$h_2 = r_1 - \sqrt{r_1^2 - (D_a / 2)^2}$

Flacher Boden



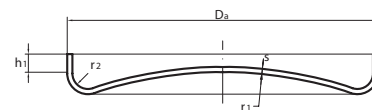
$$h_1 = 3.5 \times s \quad h_2 = r_2 \quad h_3 = h_1 + h_2$$

Tellerboden



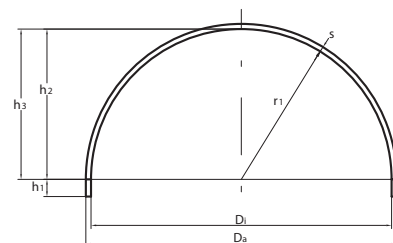
$$r_1 = D_i \quad h_2 = 0.134 \times D_i$$

Diffuseurboden



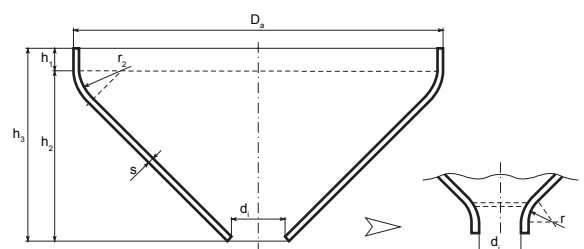
$$\begin{aligned} r_1 &\geq 1.3 \times D_a & h_1 &\geq 3.5 \times s \\ r_2 &= 15 - 50 \text{ mm je nach Größe} \end{aligned}$$

Halbkugelboden



$$\begin{aligned} D_i &= D_a - 2 \times s & h_1 &= \text{nach Angabe möglich} \\ r_1 &= 0.5 \times D_i & h_2 &= r_1 \\ & & h_3 &= h_1 + h_2 \end{aligned}$$

Konus



Aushalsung am engen Ende auf Wunsch möglich

Legende:

s = Wandstärke, Da = Außendurchmesser, Di = Innendurchmesser, h1 = zyl. Bordhöhe, h2 = Wölbungshöhe, h3 = Gesamthöhe innen, r1 = Wölbungsradius, r2 = Eckradius